



**CAPSAHEALTHCARE**

Engineering a path to  
better care.



# M40 Computer Carts

## User Manual

# Legal

Copyright © 2026 Capsa Healthcare. All rights reserved.

This document and products it describes constitute proprietary information of Capsa Healthcare, its affiliated companies, or its or their licensors, and may not be used for any unauthorized purpose.

Your purchase of Capsa Healthcare products does not grant—either directly, by implication, or otherwise—any license under the copyrights, patents, or patent applications of Capsa Healthcare, except for the normal non-exclusive, royalty-free license to use that arises by operation of law in the sale of a product.

Capsa Healthcare does not assume any liability arising out of the applications or use of any product described herein; neither does it cover any license under its patent rights nor the rights of others.

While Capsa Healthcare strives to provide complete and accurate information, it will not be held liable for any editorial errors or omissions.

Capsa Healthcare reserves the right to make changes to the documentation without advanced notice.

Specifications and product attributes are subject to change without notice.

Capsa Healthcare, Artromick, Avalo, Kirby Lester, NexPak, NexsysADC, RoboPharma, Trio, TruAir, and Tryten and their respective logos are trademarks or registered trademarks of Capsa Healthcare.

All other trademarks are the property of their respective owners.

---

# Contents





<b>Safety Information</b> .....	<b>4</b>
Safety notices .....	4
Symbols .....	6
<b>Introduction</b> .....	<b>7</b>
Box contents.....	7
Statement of use .....	7
Specifications.....	8
Overall view .....	10
Model matrix .....	11
<b>Get Started</b> .....	<b>12</b>
Install the power cord.....	12
Install the monitor support.....	12
<b>Setup</b> .....	<b>13</b>
Open the work surface.....	13
Install the keyboard, mouse, and data cable .....	14
Install the laptop power supply .....	15
Install the laptop .....	16
Install the monitor.....	17
Install the CPU .....	18
<b>Operation</b> .....	<b>19</b>
Operating procedure.....	19
Moving the cart .....	19
Casters .....	20
Height adjustment.....	20
Task light .....	21
Laptop/storage tray.....	22
Tech box .....	23
<b>Maintenance</b> .....	<b>24</b>
Inspection checklist .....	24
<b>Troubleshooting</b> .....	<b>25</b>
<b>Service</b> .....	<b>26</b>
Service request .....	26
Service level commitment .....	26
Cart disposal.....	26
<b>Cleaning</b> .....	<b>27</b>
Recommendations .....	27
Cleaning of high touch point items.....	27
<b>Standards Compliance</b> .....	<b>28</b>
Test compliance .....	28
Product classification .....	28
<b>Warranty</b> .....	<b>29</b>

# Safety Information


## Understanding safety notices







Safety notices provide information on ensuring safe operating conditions for your Capsa Healthcare products. Notices include an icon and heading that describe the severity of the information. Each type of notice uses a different shape and color for the icon.

An icon with a lightning bolt ⚡ symbol indicates an electrical hazard that could cause a fire as well as resulting in injury or death.

ICON	SEVERITY
	<b>IMPORTANT.</b> This indicates a situation that does not present a hazard but is important in maintaining a well-functioning workstation.
	<b>CAUTION.</b> This indicates a hazardous situation that could result in minor or moderate injury if not avoided.
	<b>WARNING.</b> This indicates a hazardous situation that could result in serious injury or death if not avoided.
	<b>DANGER.</b> This indicates a hazardous situation that will result in serious injury or death if not avoided.



## Safety notices

	<ol style="list-style-type: none"> <li>1. The responsible organization should refer to standard 60601-1 for requirements that are applicable to a medical device system.</li> <li>2. In order for your system to remain compliant with standard 60601-1, you should only connect equipment that is also compliant with 60601-1.</li> <li>3. Use of this equipment adjacent to or stacked with other equipment should be avoided because it could result in improper operation. If such use is necessary, this equipment and the other equipment should be monitored to verify that they are operating normally.</li> <li>4. Use of accessories, transducers, and cables other than those specified or provided by the manufacturer of this equipment could result in increased electromagnetic emissions or decreased electromagnetic immunity of this equipment and result in improper operation.</li> <li>5. The supplied power cord is rated for medical use. Connecting the cord to an outlet that is not medical grade (indicated with a green dot) will not ensure grounding protection.</li> <li>6. The Workstation is for indoor use only. <b>DO NOT</b> operate outdoors.</li> <li>7. Inspect the power cord before integration. <b>DO NOT</b> use the power cord if it is damaged.</li> <li>8. Fully insert the power cord plug into the outlet. <b>DO NOT</b> unplug by pulling on the cord. <b>DO NOT</b> remove, bend or modify any metal prongs or pins of the power cord.</li> <li>9. <b>DO NOT</b> use excessive force to make mechanical or electrical connections.</li> <li>10. <b>DO NOT</b> use an electrical extension cord with your workstation.</li> <li>11. This equipment is not suitable for use in the presence of a flammable anesthetic fixture with metered oxygen or nitrous oxide.</li> </ol>
---	--

	<p>12. <b>DO NOT</b> position the cart so that it is difficult to disconnect it from power.</p> <p>13. <b>DO NOT</b> obstruct the cooling vents.</p> <p>14. <b>DO NOT</b> overload the cart. See <b>Model matrix</b> on page 11 for weight limits.</p> <p>15. <b>DO NOT</b> operate the cart on an incline exceeding 10 degrees.</p> <p>16. <b>DO NOT</b> use the cart to power equipment that is not part of the configured cart system.</p> <p>17. <b>DO NOT</b> connect equipment that is not mounted on the cart into the power system outlets. The power system is designed to power cart-mounted equipment only.</p> <p>18. <b>DO NOT</b> modify this equipment without authorization from the manufacturer.</p>
	<p>19. Keep the power cord away from water. <b>DO NOT</b> plug the cord into an outlet if the cord is wet.</p> <p>20. To avoid potential electrical shock, <b>DO NOT</b> simultaneously touch any cart system components and the patient or any apparatus not connected to the cart system. Electric current may try to flow through you between the system and the other point of contact as it seeks the easiest path to ground.</p>
	<p>21. This product can expose you to chemicals including styrene and lead, which are known to the State of California to cause cancer. For more information see <a href="https://www.P65Warnings.ca.gov">https://www.P65Warnings.ca.gov</a>.</p>
	<p>22. This equipment is supplied with an integral multiple socket-outlet intended solely for supplying power to equipment that is part of the medical system.</p> <p>23. The integral multiple socket-outlet is not intended as a general-purpose power outlet.</p> <p>24. <b>DO NOT</b> connect non-medical electrical devices to the multiple socket-outlet.</p> <p>25. <b>DO NOT</b> exceed the maximum total load indicated near the socket-outlet.</p> <p>26. The connected equipment must comply with applicable medical electrical safety standards.</p> <p>27. Improper connection may create a risk of electric shock, fire, or system malfunction.</p> <p>28. The integrity of protective earth and leakage currents may be affected if unauthorized equipment is connected.</p>
	<p>29. <b>DO NOT</b> use a flammable cleaner on the workstation as it can result in fire or explosion.</p>
	<p>30. <b>DO NOT OPERATE THIS PRODUCT IF IT IS WET.</b> If the product becomes wet, unplug it immediately, wipe off any excess liquid and allow it to dry before using it again.</p> <p>31. To avoid the risk of electric shock, this equipment must only be connected to a supply main with protective earth.</p>

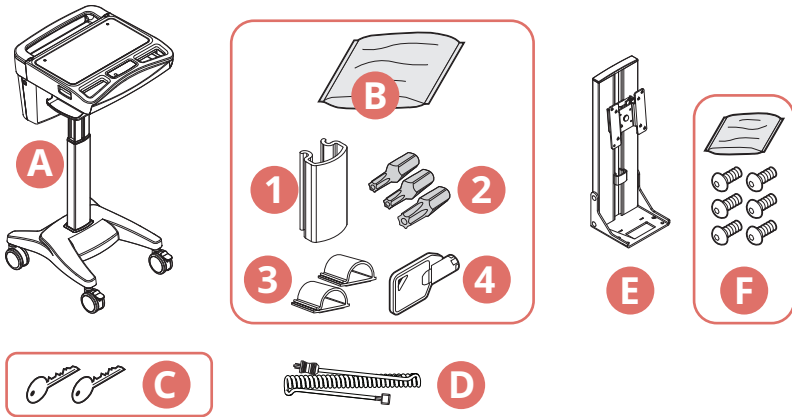
# Symbols

These symbols are used on the cart or packaging.

IMAGE	LOCATION	MEANING
 M06017401	Inside the tech box	<b>Protective Earth (Ground)</b>
	At the top of the column	<b>Refer to instruction manual</b> Read the user manual before operating the equipment.

# Introduction

## Box contents



- A.** M40 cart (attachments will vary)
- B.** Accessory kit
  1. Power cord clip
  2. Security bits
  3. Mouse and keyboard cord clips
  4. Drawer module lock override (carts equipped with drawer modules only)
- C.** Security keys (2) (taped to the mouse holder)
- D.** Power cord (Laptop cart with power cord kit; CPU/LCD cart)
- E.** Monitor support (CPU/LCD cart)
- F.** M6x10 mounting screws (6) (CPU/LCD cart)

## Statement of use

The M40 Mobile Computer Cart is designed and manufactured by Capsa Healthcare. Capsa Healthcare's goal is to elevate your performance by offering innovative solutions that positively impact clinical effectiveness and enhance medication management processes throughout all healthcare environments.

- The M40 Mobile Computer Cart is a mobile computing workstation cart designed for safe use by trained medical staff in general patient areas for the purpose of clinical data entry and retrieval and medication delivery.
- The M40 Mobile Computer Cart is not intended for home use.
- The M40 Mobile Computer Cart has no potential electromagnetic or other interference risks when operated according to guidelines covered in this manual.

- The EMISSIONS characteristics of this equipment make it suitable for use in industrial areas and hospitals (CISPR 11 class A). If it is used in a residential environment (for which CISPR 11 class B is normally required) this equipment might not offer adequate protection to radio-frequency communication services. The user might need to take mitigation measures, such as relocating or re-orienting the equipment.
- This equipment is a Class I, internally-powered device with no applied parts. Protection from electric shock is provided through protective earth, basic insulation, and operation from isolated low-voltage power circuits. No circuits intended for patient connection are present.
- The responsible organization shall refer to standard 60601-1; assembly of ME SYSTEMS and modifications during the actual service life require evaluation to the requirements of this standard.

To ensure safety, please read this manual carefully before installation and follow the instructions herein. Keep this manual for future reference.

The manufacturer shall not be legally responsible for any equipment damage or personal injury caused by incorrect installation or operation other than that covered in this manual.

**Capsa Healthcare**

4253 NE 189th Ave.

Portland, OR 97230

**Customer Service:** 800.437.6633

**Web site:** <https://www.CapsaHealthcare.com>

## Specifications

### Common specifications

ITEM	SPECIFICATION
Base Size	17 by 19 in. (43.2 by 48.3 cm)
Weight	Configurations starting at 53 lb. (24.0 kg)
Height Adjustment	16 in. (40.6 cm)
Laptop/Storage Tray	16 by 12 by 1.5 in. (40.6 by 30.5 by 3.8 cm) Accommodates up to 17 in. laptop or tablet computer
Work Surface	20 in. W by 11 in. D (50.8 cm W by 27.9 cm D)
Keyboard Platform	Accommodates 1.75 in. H by 18 in. W by 8 in. D (4.4 cm by 45.7 cm by 20.3 cm) USB keyboard
Mouse Area	Bi-directional mouse pad 8.5 in. by 9.5 in. (21.6 cm by 24.1 cm)
USB Powered Task Light	USB A to Mini-B
Document Cover	19.5 in. by 9.75 in. (49.5 cm by 24.8 cm)

## Laptop cart with power cord kit

ITEM	SPECIFICATION
Power Supply Compartment	20 by 5.75 by 1.75 in. (50.8 by 14.6 by 4.4 cm)
Power Cord	2.5 ft (0.76 m) hospital grade spiral cord, extends to 8 ft (2.44 m), recharges on board technology, 120 V AC, 5 A, 60 Hz
Power Strip	3 - NEMA 5/15 outlets with inline fusing
Replacement Fuse	6.3 A, 250 V max, 5 mm × 20 mm

## CPU/LCD cart

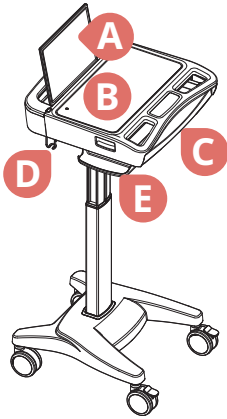
ITEM	SPECIFICATION
Tech Box	14.5 by 9.4 by 2.7 in. (36.8 by 23.9 by 6.9 cm)
LCD Monitor Mount	25 lb. (11.3 kg) max.
Power Cord	2.5 ft (0.76 m) hospital grade spiral cord, extends to 8 ft (2.44 m), recharges on board technology, 120 V AC, 5 A, 60 Hz
Power Strip	3 - NEMA 5/15 outlets with inline fusing
Replacement Fuse	6.3 A, 250 V max, 5 mm × 20 mm

## Environmental conditions

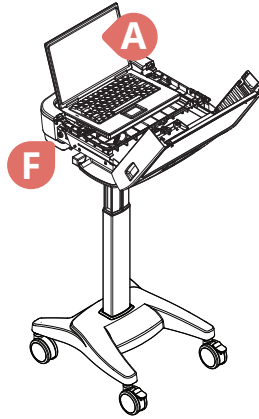
CONDITION	RANGE
Storage/Transport Temperature	5°F to 113°F (-15°C to 45°C)
Operating Temperature	32°F to 104°F (0°C to 40°C)
Storage/Transport Altitude	-200 to +25,000 ft. (-61 to +7620 m) referenced to sea level
Operating Altitude	0 to +9842 ft. (0 to +3000 m) referenced to sea level
Storage/Transport Humidity	10% to 90% RH non-condensing
Operating Humidity	20% to 80% RH non-condensing
Operating Atmospheric Pressure	69.7 kPa to 102 kPa

# Overall view

## Laptop cart

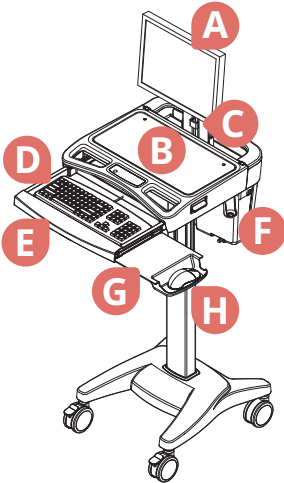


- A. Laptop
- B. Work surface
- C. Keyboard drawer

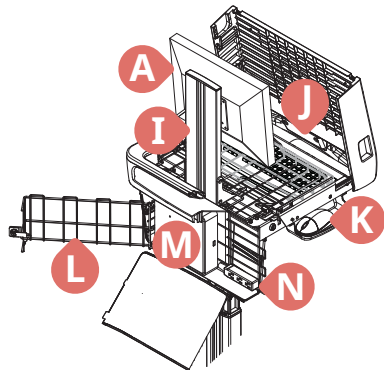


- D. Plug holder
- E. Mouse holder
- F. Power supply enclosure

## CPU/LCD cart



- A. Monitor
- B. Document cover
- C. Cable clamp
- D. Keyboard
- E. Keyboard drawer
- F. Tech box
- G. Mousing surface



- H. Mouse holder
- I. Monitor support
- J. Task light
- K. Mouse
- L. Security door
- M. CPU
- N. Power strip

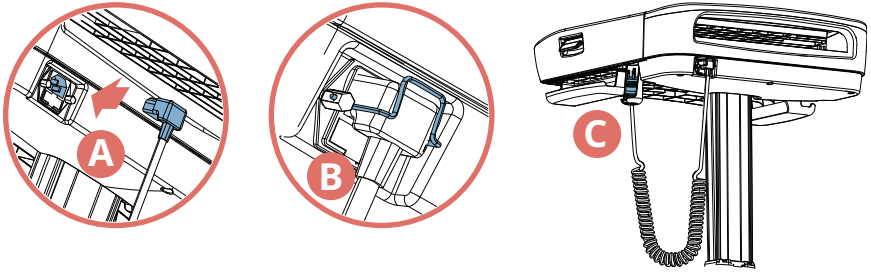
## Model matrix

**NOTE:** The *technology weight limit* is the maximum combined weight of user-added technology. This can include a CPU and monitor, an all-in-one system, or a laptop; power supply; keyboard; and mouse.

SKU	DESCRIPTION	TECHNOLOGY WEIGHT LIMIT
1854483	M40 Laptop Cart, 160N Column	20 lb. (9.0 kg)
1854484	M40 Laptop Cart, 200N Column	30 lb. (13.6 kg)
1854485	M40 Computer Cart, 200N Column	30 lb. (13.6 kg) 25 lb. (11.3 kg) maximum monitor/all-in-one weight

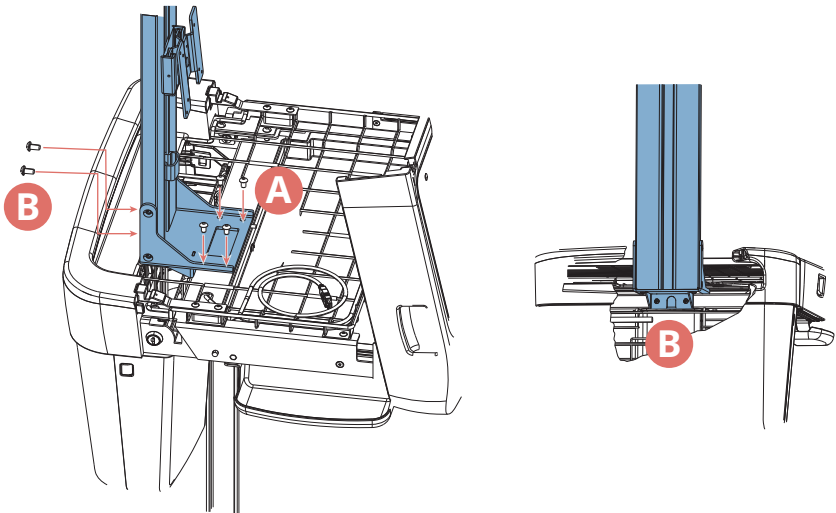
# Get Started

## Install the power cord



1. Plug the power cord into the computer cart (A).
2. Position the bale (B) to secure the power cord.
3. Stow the plug in the holder (C).

## Install the monitor support



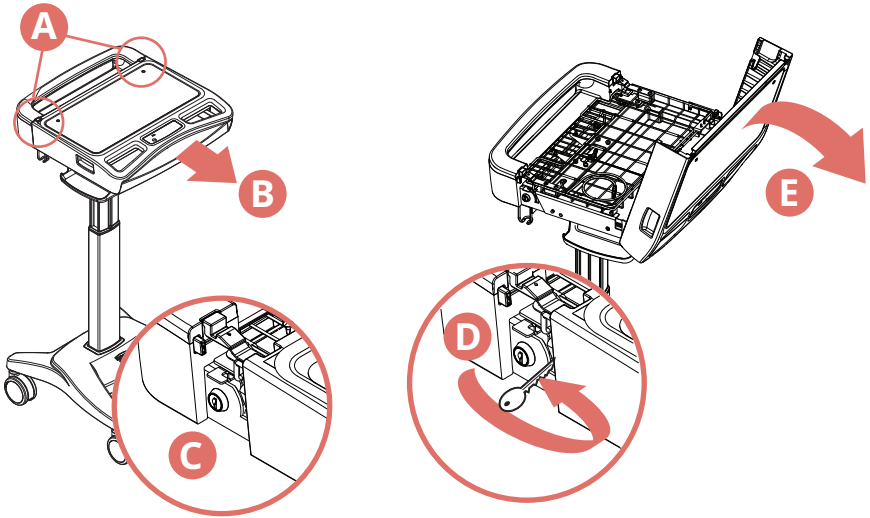
1. Install the monitor support with four screws (A) through the base of the support as shown.

**Do not tighten.**

2. Install two screws through the vertical support (B) as shown.
3. Tighten all six screws.

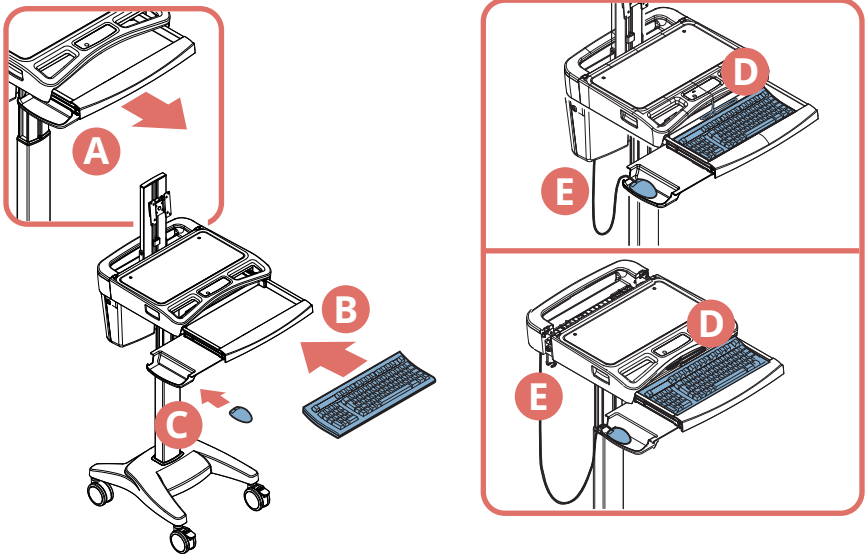
# Setup

## Open the work surface



1. Press the two latches (A) to release the work surface.
2. Pull the work surface forward (B) to expose the locks on both sides (C).
3. Unlock the work surface (D).
4. Lift the rear of the work surface (E) to expose the storage/laptop tray.

## Install the keyboard, mouse, and data cable

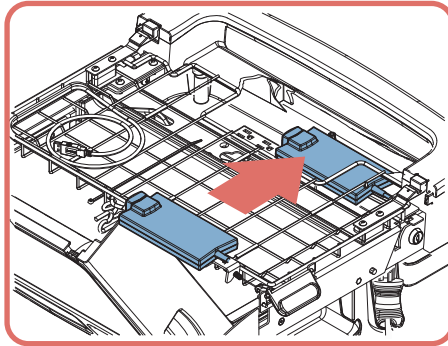


1. Open the keyboard drawer (A).
2. Place the keyboard (B) in the keyboard drawer.
3. Place the mouse (C) in the mouse holder.
4. Route the keyboard cable (D) to the tech box/laptop tray.
5. Route the mouse cable (E) to the tech box/laptop tray.
6. If you are using a wired network, route a data cable to the tech box/laptop tray.

**NOTE:** Use cable ties to secure the cables to the cart for strain relief.

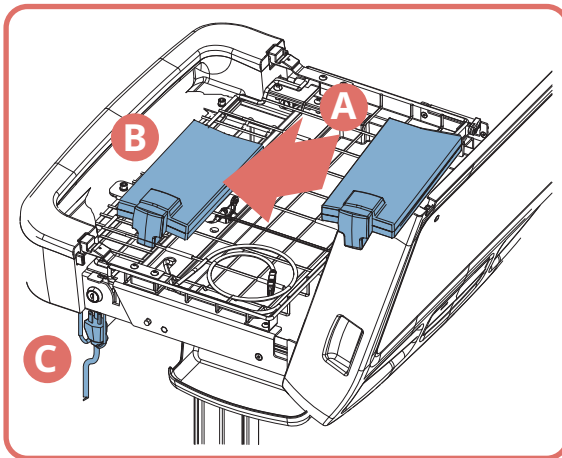
# Install the laptop power supply

## Laptop cart with power cord kit



1. Place the power supply in the power supply enclosure.
2. Route the computer power cable to the laptop tray.
3. Plug the power supply into the power strip.

## Laptop cart without power cord kit

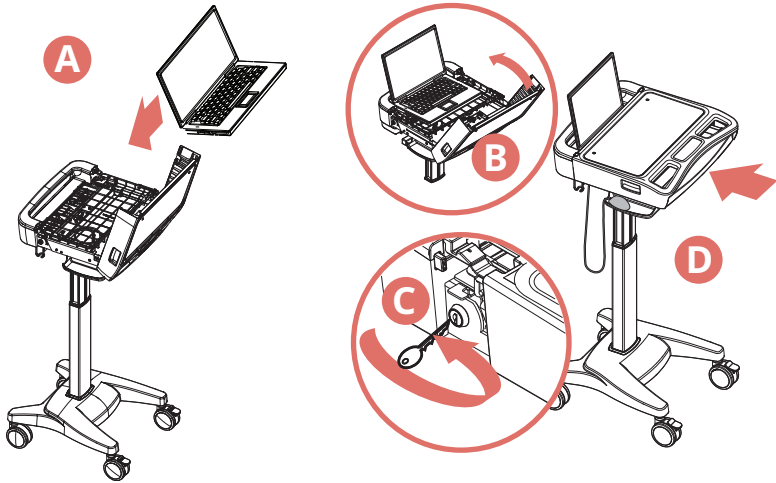


1. Place the power supply in the power supply tray.
2. Fasten the power supply to the tray with cable ties.

**NOTE:** Use cable ties to secure the power cord to the tray for strain relief.

3. Route the computer power cable to the laptop tray.
4. Stow the plug as shown.

## Install the laptop

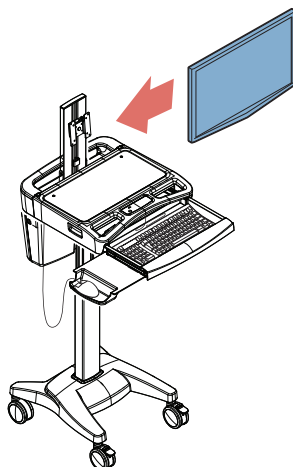


1. Place the laptop computer in the laptop tray (A).
2. Make the necessary cable and electrical connections.

**NOTE:** The task light must be plugged into a powered USB port or it will not work. (See your computer documentation for the location of the powered USB ports.)

3. Position the laptop as shown.
4. Lower the work surface (B).
5. Lock and close the work surface (C).
6. Close the keyboard tray (D).

## Install the monitor



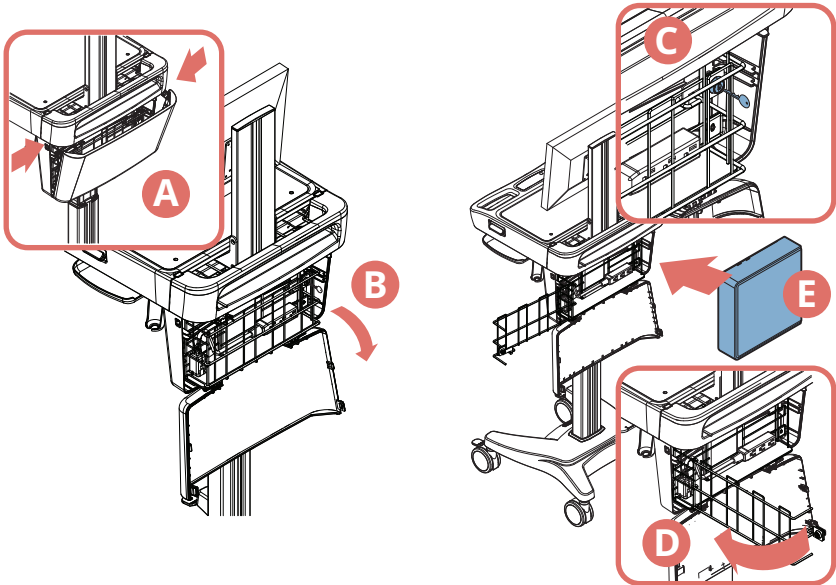
1. Mount the monitor to the cart.

**NOTE:** Use the mounting screws supplied with the monitor.

2. Route the monitor power to the tech box.

**i** **IMPORTANT:** Ensure full movement of the monitor mount! To avoid damage to the monitor connections, verify there is enough cable slack to allow for full rotation of the mount and that accessories do not interfere with the range of motion.

## Install the CPU



1. Press the two latches (A) to release the tech box door, then lower the door (B).
2. Insert the key where shown (C), then turn the key to unlock the security door.
3. Open the security door (D) by pulling it outward.
4. Place the CPU (E) in the tech box.

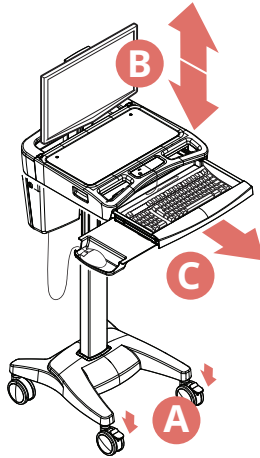
**NOTE:** Install the CPU with the power button accessible from the top.

5. Make the necessary electrical and cable connections.
6. Close and lock the security door.
7. Close the tech box door.
8. Lock and close the work surface.

**NOTE:** The task light must be plugged into a powered USB port or it will not work. (See your computer documentation for the location of the powered USB ports.)

# Operation

## Operating procedure



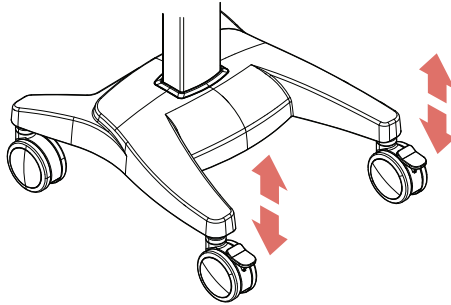
1. Move the cart into position.
2. Lock the casters (A).
3. Adjust the height of the work surface (B).
4. Plug in the power cord.
5. If you are using a wired network , plug in the network cable.
6. Extend the keyboard drawer and the mousing surface (C).
7. Start the computer.

## Moving the cart

The cart has four casters to easily move the cart to the preferred location.

1. Make sure that the path is clear of any obstructions.
2. Retract the keyboard tray.
3. Unplug the cart from the wall and store the cord on its hook.
4. Securely store or remove any items on the work surface.
5. Unlock the casters (see **Casters** on page 20).
6. Move the cart to its destination.
7. Lock the casters.

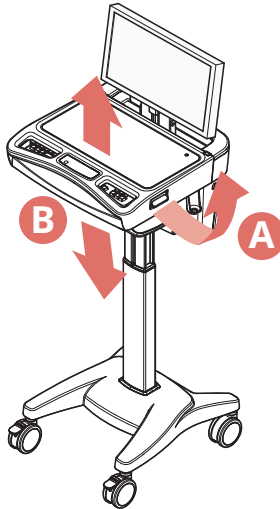
## Casters



To operate braking casters:

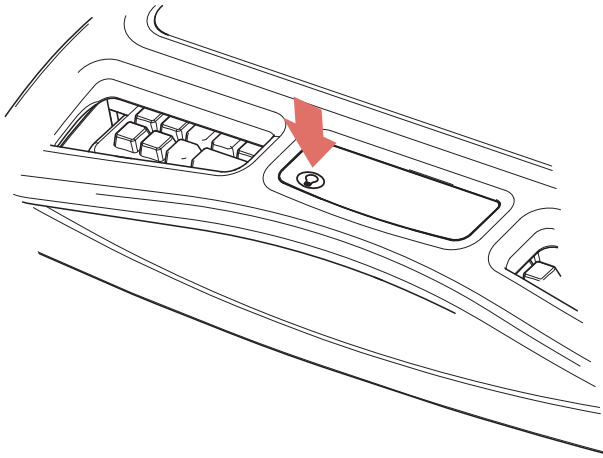
1. Lower the tab with your toe to lock a caster.
2. Lift the tab with your toe to unlock a caster.


## Height adjustment



1. Hold the work surface steady and lift up and hold the height adjustment handle.
2. Raise or lower the work surface, then release the handle.

## Task light

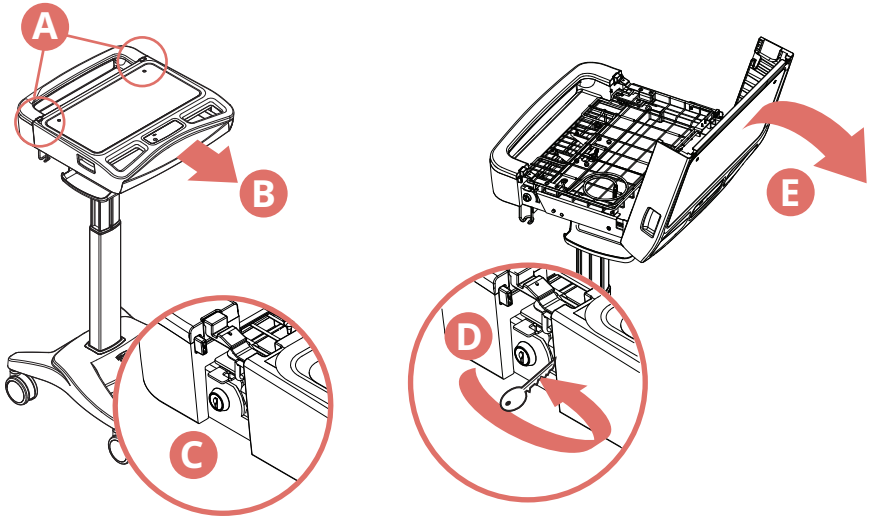


- Press the  button to turn the task light on or off.

The task light will automatically turn off after 3 minutes.

**NOTE:** The task light must be plugged into a powered USB port or it will not work. (See your computer documentation for the location of the powered USB ports.)

## Laptop/storage tray

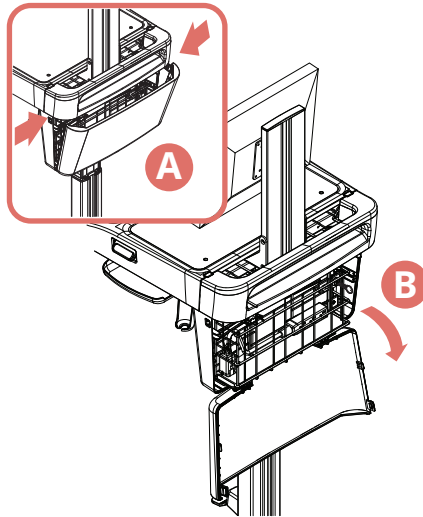


1. Press the two latches (A) to release the work surface.
2. Pull the work surface forward (B) to expose the locks on both sides (C).

**NOTE:** If The laptop power switch is inaccessible, you will have to unlock and open the work surface.

3. Unlock the work surface (D).
4. Lift the rear of the work surface (E) to expose the storage/laptop tray.

## Tech box



**To open the tech box**, press the two latches (A) to release the tech box door, then lower the door (B).

**To close the tech box**, raise the door until it is latched on both sides.

# Maintenance



**CAUTION:** Do not use the computer cart if pieces are missing or the unit is damaged. In these cases, immediately contact Capsa Healthcare Customer Service at 800.437.6633 for assistance.

- **Cables:** Always keep the cables neatly organized and be sure to route the cables away from moving components with wire ties or cable clips.
- **Electric Cables:** Periodically inspect the power cord and the plug to ensure the plug is not bent and the cable is not frayed.

## Inspection checklist

To protect optimal performance, Capsa Healthcare recommends a periodic inspection and preventative maintenance of your computing cart fleet. These simple steps can safeguard against breakdowns and help you realize uninterrupted workflow and cart availability.

ITEMS	ACTION	BENEFIT
<b>AC power cord, internal cables assemblies</b>	Inspect wires and components for any damage; ensure there are no loose connectors.	Identifies potential safety issues, extends battery life, ensures consistent recharging and optimizes workstation runtime.
<b>Casters</b>	Check casters for proper tightness, ensure casters are free of dirt and grime and operate smoothly.	Mitigates risk of injury due to loose casters. Ensures proper maneuverability of workstation.
<b>Inspect keyboard tray movement</b>	Check range of keyboard tray for full field of motion and stability.	Proper adjustment supports ergonomic capability that meets unique requirements of multiple users.
<b>Inspect work surface area</b>	Inspect work surface for cleanness and damage.	Promotes proper infection control practices and maintains protected area for internal electrical components.
<b>Inspect height adjustment</b>	Check height adjustment for proper function, including full range of motion.	Facilitates simple height and ergonomic adjustments; ensures comfortable use by clinical staff.
<b>Inspect keyboard light</b>	Check all lighting and switch operation; confirm lights function properly.	Supports proper lighting for reading, work surface tasks, and safe cart maneuvering in low light environments.
<b>Inspect all bins and drawers</b>	Check functionality of bins and drawers including locking function.	Smooth operation of bins and drawers provides secure, organized storage.
<b>Inspect mounted accessories</b>	Check for secure fit to mount area and tighten if necessary.	Ensure stable accommodation of peripheral device holders and other accessories and supplies.

# Troubleshooting

PROBLEM	SOLUTION
<b>Cart will not raise or lower</b>	Check for cable obstructions (kinks).
<b>Cart is hard to push</b>	<ul style="list-style-type: none"> <li>• Verify the caster locks are in the unlocked (up) position.</li> <li>• Examine casters for debris caught in or under the casters.</li> </ul>
<b>Keyboard tray does not raise or lower</b>	<ul style="list-style-type: none"> <li>• Inspect for cable obstructions.</li> <li>• Adjust the keyboard arm tray knob counterclockwise to loosen.</li> <li>• Adjust the keyboard arm tray knob clockwise to tighten.</li> </ul>
<b>Task light does not work</b>	Make sure the USB cable is plugged in to a powered USB port.
<b>Computer or monitor will not power up</b>	<ul style="list-style-type: none"> <li>• Check that the cart is plugged in.</li> <li>• Check that the device power cables are connected.</li> <li>• Check that the wall outlet has power.</li> <li>• Check fuses at the cart power inlet.</li> </ul>
<b>Keyboard does not work properly</b>	<ul style="list-style-type: none"> <li>• Ensure that the USB hub is powered and plugged in to the power supply (green light indicator).</li> <li>• Make sure the keyboard is plugged in to the USB hub.</li> <li>• If the problem persists, plug the device into another cart to see if it functions properly.</li> </ul>
<b>Computer does not work properly</b>	<ul style="list-style-type: none"> <li>• Verify the computer has power.</li> <li>• If the problem persists, plug the device into another cart to verify it is functioning properly.</li> </ul>

# Service

## Service request

Please visit our website at [www.CapsaHealthcare.com/service-support](http://www.CapsaHealthcare.com/service-support) to file a request for parts.

## Service level commitment

Capsa Healthcare is committed to providing best-in-class service. This document details our standard warranty and instructions on how to request service using our customer support system.

## Cart disposal

Dispose of this cart according to local guidelines and regulations for disposal of electronic equipment. For more information contact Capsa Healthcare Customer Service at 800.437.6633.

# Cleaning



**CAUTION:** Due to the close proximity of electrical power and equipment, flammable cleaners should never be used on the cart!

- Verify that your cart is unplugged from the wall outlet before cleaning.
- Allow your cart to dry completely before plugging the power cord into a wall outlet.
- When cleaning the cart, wipe off the surface with a damp cloth and thoroughly dry.
- Never immerse the cart or its components in liquid or allow liquids to flow into the cart.
- Never use steel wool or other abrasive materials as these could damage the surface finish.
- Before using any cleaner on the cart, first test it on a small area to ensure that the surface is not harmed.
- These guidelines cannot guarantee infection control. The hospital's Infection Control Administrator should be consulted for cleaning procedures and processes.

## Recommendations

- Clean plastic components with diluted, non-abrasive solutions. Suggested cleaners are: water, soap, diluted bleach, and alcohol solutions.
- Remove pen and dry erase marker stains with a soft cloth and 91% isopropyl alcohol.
- Remove iodine stains with a soft cloth and any of the cleaners suggested above.
- **DO NOT** use the following chemicals to clean your cart: acetone, mineral spirits, abrasive cleansers, paint thinner, or any other harsh or toxic chemicals.

## Cleaning of high touch point items

1. The work surface is fully removable to facilitate cleaning.
2. The document protector is removable (pull up on the back corners). To refasten, press the nylon fastener into the hole in the work surface. This is a replaceable item.
3. The back handle is fully removable.
4. Rear bins can be removed by grabbing the outside edge of the bin and lifting up.
5. The keyboard tray and mouse pads are composed of melamine resin and are easy to wipe down.

# Standards Compliance

## Test compliance

### NRTL

- 60601-1, Ed. 3.2
- ANSI/AAMI ES60601-1;
- CAN/CSA C22.2 No. 60601-1
- IEC 60601-1-2:2020 AMD+1
- 47 CFR FCC Part 15, Subpart B
- ANSI C63.4: 2014
- ICES-003, Issue 7
- ICES-GEN, Issue 1
- Radiated Emissions
- Conducted Emissions
- IEC 61000-3-2, Harmonic Current
- IEC 61000-3-3, Voltage Fluctuation & Flicker

### FCC

- PART 15, Subpart B, Class A – Unintentional Radiators

## Product classification

- Class 1/ Internally powered device with no applied parts
- This equipment is designed for continuous operation
- Class A, Group 1 ISM Equipment
- This device is classified IPX0 for water ingress
- Input 120 V AC, 60 Hz, 5 A

# Warranty

## Limited warranty for M40 computer cart

Capsa Healthcare (CHC) is pleased to offer a three-year warranty on parts. If during the warranty period this CHC product proves defective in materials or workmanship under normal use by the original purchaser, please contact CHC technical support at [www.capsahealthcare.com/service](http://www.capsahealthcare.com/service) (please be sure to complete all information, including product serial number, description of the issue, and full contact information). CHC will determine, at its sole discretion, how to best address your warranty issue, which may include sending you a replacement part\* covered under warranty or for sale. CHC reserves the right to require proof-of-purchase prior to honoring any warranty request. This warranty does not cover product abuse, modification, failure to adhere to product instructions, or improper operation/misuse. CHC SHALL NOT BE LIABLE FOR ANY CONSEQUENTIAL OR INCIDENTAL DAMAGES WHATSOEVER. Some states do not allow the exclusion or limitation of incidental or consequential damages, so the above limitation or exclusion may not apply to you. This warranty gives you specific legal rights and you may also have other rights which vary from state to state or country to country.

## Service details

Consumable components are not covered under warranty and include:

- Locks and keys
- Document cover

Other standard components will be replaced under the applicable warranty following a filed service request.

\* The above terms for replacement parts applies to facilities located in the United States. All other customers should contact the appropriate reseller for the terms of part replacement.

All terms are subject to change without notice.







# CAPSAHEALTHCARE

[www.CapsaHealthcare.com](http://www.CapsaHealthcare.com) | 800.437.6633  
8170 Dove Parkway  
Canal Winchester, OH 43110

**Support:** 800.437.6633 or [Field.Service@CapsaHealthcare.com](mailto:Field.Service@CapsaHealthcare.com)

**Online Support Request:** [www.CapsaHealthcare.com/service-support](http://www.CapsaHealthcare.com/service-support)

**Sales:** 800.437.6633 or [Info@CapsaHealthcare.com](mailto:Info@CapsaHealthcare.com)

**Parts:** 800.437.6633 or [Parts.Support@CapsaHealthcare.com](mailto:Parts.Support@CapsaHealthcare.com)